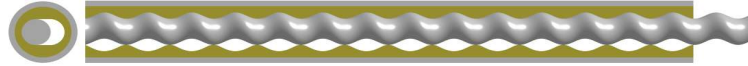




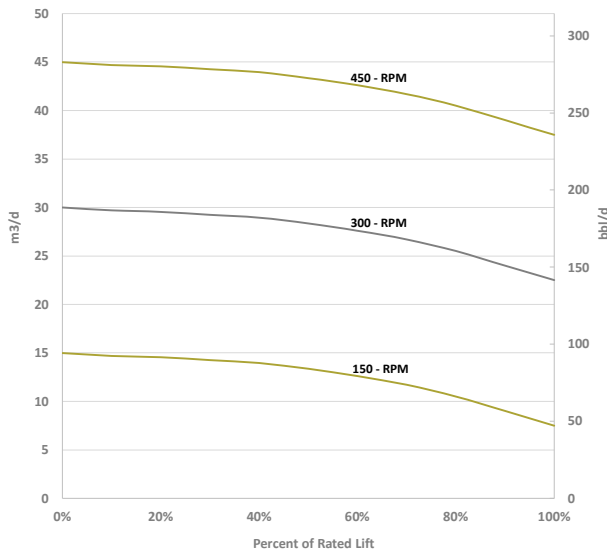
PUMP SPECIFICATION

010M - STD - FL

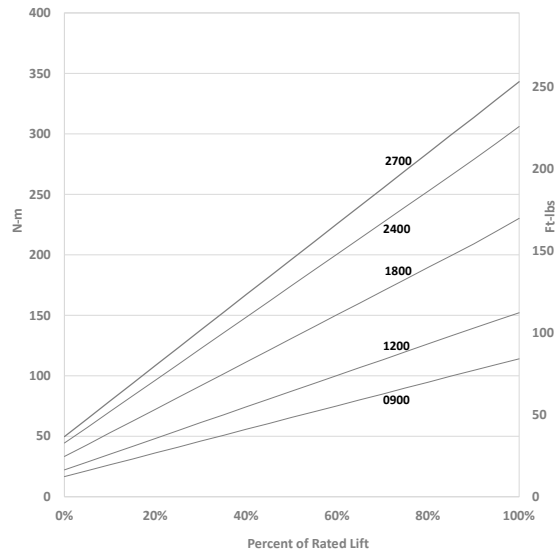


10 m ³ / Day / 100 RPM (63 bbl / Day / 100 RPM)						
Available Models		010 M 0900	10 M 1200	010 M 1800	010 M 2400	010 M 2700
		Geometry: Single Lobe		Operating Speed: 50 - 500 RPM		Free Gas Volume Fraction: 40% continuous
Swept Rotor Angle:		33		Orbit Helix - mm (in): 56.00 (2.205)		Intake cavity area - mm ² (in ²): 684 (1.06)
Pump Lift H ₂ O - m (ft)		900 (2952)	1200 (3936)	1800 (5904)	2400 (7872)	2700 (8856)
Rated Pressure kPa (psi)		9000 (1305)	12000 (1740)	18000 (2611)	24000 (3481)	27000 (3916)
Rated Torque N-m (ft-lbs)		114 (84)	152 (112)	230 (169)	306 (225)	343 (253)
ROTOR	Rotor Top Connection mm (in)	7/8" API Pin				
	Rotor Head Diameter mm (in)	41.30 (1.625)				
	Overall Rotor Length m (in)	2.46 (97)	3.13 (123)	4.42 (174)	5.72 (225)	6.38 (251)
	Weight kg (lbs)	20 (44)	27 (59)	40 (88)	53 (117)	60 (132)
	Nominal Rotor Drift OD mm (in)	48.17 (1.896)				
STATOR - STD	Stator OD mm (in)	90.0 (3.54)				
	Collar OD (mm)	97.64 (3.844)				
	Connection Discharge - Intake	3 1/2" NUE Pin - 3 1/2" NUE Pin				
	Stator Overall Length w TB m (in)	2.42 (95)	3.08 (121)	4.38 (172)	5.67 (223)	6.38 (251)
	Weight kg (lbs)	38 (84)	51 (112)	76 (167)	101 (222)	114 (251)
	Distance TB to Elastomer mm (in)	300 (12)				
STATOR - FL	Tagbar/sub bottom connection	2 7/8" EUE Pin				
	Stator OD mm (in)	FL - 90 (3.54)				
	Collar OD mm (in)	FL - 90 (3.54)				
	Connection Discharge - Intake	2 7/8" EUE Box - 2 7/8" EUE Box				
	Stator Overall Length w TB m (in)	2.62 (103)	3.28 (129)	4.58 (180)	5.87 (231)	6.54 (257)
	Weight kg (lbs)	38 (84)	51 (112)	76 (167)	101 (222)	114 (251)
NOTE	Distance TB to Elastomer mm (in)	300 (12)				
	Tagbar/sub bottom connection	2 7/8" EUE Pin				

Target in Well Flow Rates m³/d (bbl/d)



Target In Well Torque N-m (ft-lbs)



'CAUSE WE GIVE A S#!T