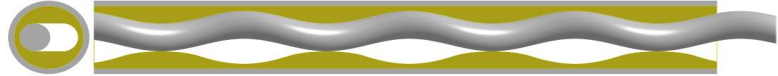




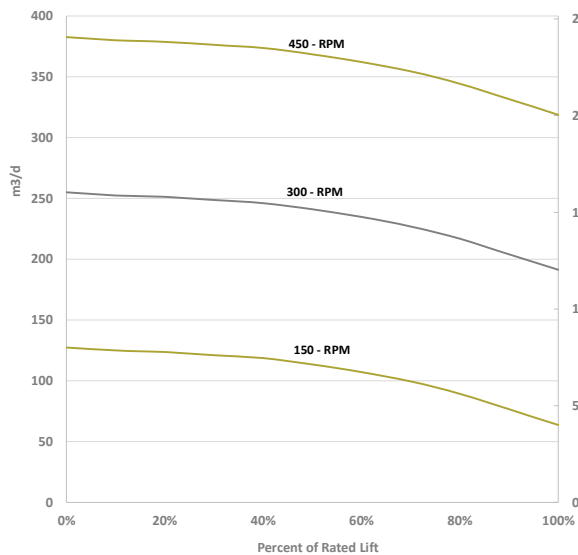
# PUMP SPECIFICATION

## 085M - STD - FLOT - SHOT

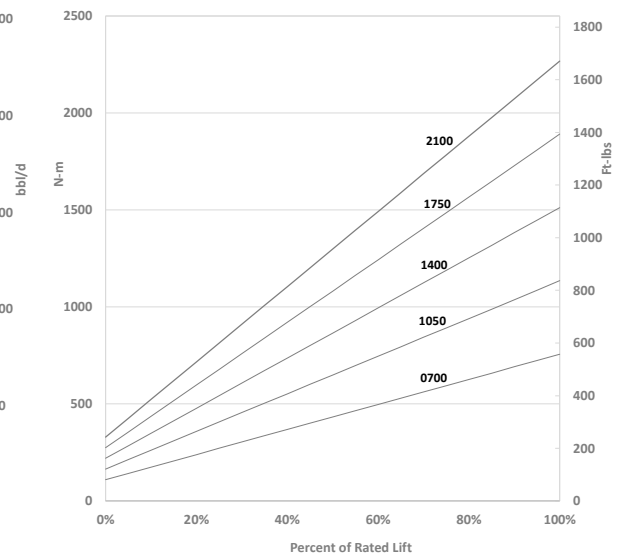


85 m3 / Day / 100 RPM ( 535 bbl / Day / 100 RPM )						
Available Models		085 M 0700	085 M 1050	085 M 1400	085 M 1750	085 M 2100
Geometry: Single Lobe		Operating Speed: 50 - 500 RPM		Free Gas Volume Fraction: 40% continuous		
Swept Rotor Angle:	50	Orbit Helix - mm (in): 74.00 ( 2.913 )		Intake cavity area - mm <sup>2</sup> (in <sup>2</sup> ): 1365 ( 2.12 )		
Pump Lift H <sub>2</sub> O - m (ft)		700 ( 2296 )	1050 ( 3444 )	1400 ( 4592 )	1750 ( 5740 )	2100 ( 6888 )
Rated Pressure kPa (psi)		7000 ( 1015 )	10500 ( 1523 )	14000 ( 2030 )	17500 ( 2538 )	21000 ( 3046 )
Rated Torque N-m (ft-lbs)		756 ( 557 )	1135 ( 836 )	1512 ( 1114 )	1891 ( 1393 )	2267 ( 1671 )
ROTOR	Rotor Top Connection mm (in)	1" API Pin				
	Rotor Head Diameter mm (in)	50.80 ( 2.00 )				
	Overall Rotor Length m (in)	5.06 ( 199 )	7.33 ( 289 )	9.61 ( 378 )	11.88 ( 468 )	14.16 ( 557 )
	Weight kg (lbs)	47 ( 103 )	71 ( 156 )	94 ( 207 )	118 ( 260 )	141 ( 310 )
STATOR - STD	Nominal Rotor Drift OD mm (in)	57.25 ( 2.254 )				
	Stator OD mm (in)	103.0 ( 4.055 )				
	Collar OD (mm)	120.65 ( 4.75 )				
	Connection Discharge - Intake	4" NUE Pin - 4" NUE Pin				
	Stator Overall Length w TB m (in)	5.01 ( 197 )	7.28 ( 287 )	9.56 ( 376 )	11.83 ( 466 )	14.11 ( 555 )
	Weight kg (lbs)	106 ( 233 )	159 ( 350 )	212 ( 466 )	265 ( 583 )	318 ( 700 )
STATOR - FLOT - SHOT	Distance TB to Elastomer mm (in)	300 ( 12 )				
	Tagbar/sub bottom connection	3 1/2" EUE Pin				
	Stator OD mm (in)	FLOT - 106 ( 4.173 ) // SHOT 99 ( 3.898 )				
	Collar OD mm (in)	FLOT - 106 ( 4.173 ) // SHOT 99 ( 3.898 )				
	Connection Discharge - Intake	FLOT - 3 1/2" EUE Box // SHOT - 2 7/8" EUE Box				
	Stator Overall Length w TB m (in)	6.23 ( 245 )	8.51 ( 335 )	10.78 ( 424 )	13.05 ( 514 )	15.33 ( 603 )
NOTE	Weight kg (lbs)	138 ( 304 )	191 ( 420 )	244 ( 537 )	297 ( 653 )	350 ( 770 )
	Distance TB to Elastomer mm (in)	300 ( 12 )				
	Tagbar/sub bottom connection	FLOT - 3 1/2" EUE Pin // SHOT - 2 7/8" EUE Pin				
Length and weight values for FLOT - SHOT reflect a 1220 mm ( 48 in ) orbit tube. Add 610 mm ( 24 in ) and 10 kg ( 22 lbs ) for extended orbit tubes.						

Target in Well Flow Rates m<sup>3</sup>/d ( bbl/d )



Target in Well Torque N-m ( ft-lbs )



'CAUSE WE GIVE A S#!T